

RT6512 Remote-Controlled VHF Radio

8.33 kHz
25 kHz

Remote

Overview

The RT6512 Remote Controlled VHF Radio from Becker Avionics, intended to respond to current regulation requirements.

Designed for fixed and rotary wing application and intended for installations in integrated avionic systems featuring standard ARINC 429 data bus.

Becker Avionics units may be controlled through a dedicated control units, integrated radio tuning unit or through FMS.

RT6512 is designed for installation in the avionics compartment, the compact and ruggedized design of the radio offers a well suited solution for a wide range of aircraft types.

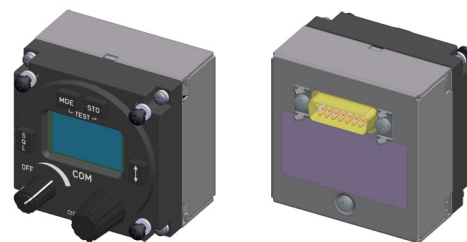


RT6512 with mounting tray

The RT6512 includes special provisions which minimizes crosstalk in case several VHF radios are installed on an aircraft. This allows optimal communication also in case of short distances between several VHF antennas. The radio is available in standard and extended range, as well as emergency function.

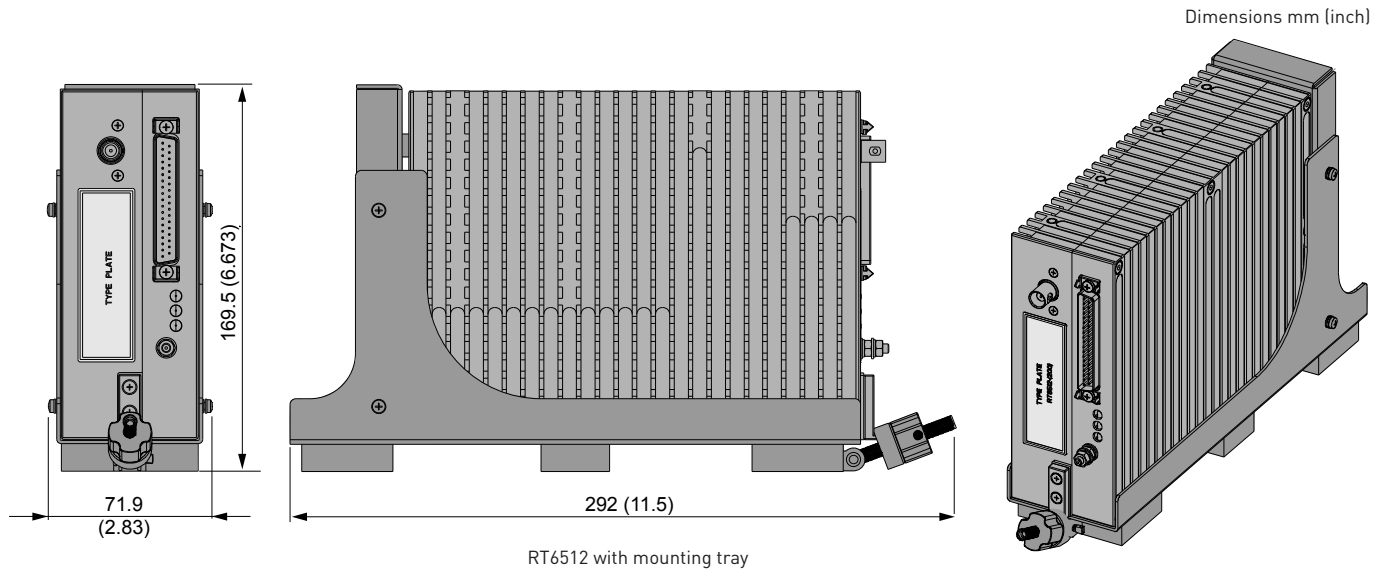
Features

- Channel spacing: 25 and 8.33 kHz
- Output power: 20 W
- Frequency range:
 - Standard 118-136.9916 MHz
 - Extended 118-155.975 MHz
- Standard communication interfaces:
 - ARINC 429 (standard)
 - RS422 (Becker proprietary)
- Emergency mode (option)
- EASA, FCC certificated
- Low weight and reduced size compared to similar devices
- Passive cooling
- Overheat protection
- Crosstalk reduction for dual installations
- Maintenance-free
- Dedicated control unit: RCU6512 from Becker Avionics



Remote Control Unit - RCU6512





Technical Data

| RT6512 | Specification |
|-------------------------------------|---|
| Power supply | 28 VDC nominal |
| Current consumption | 0.6 A nominal, 7 A in TX mode |
| Transmitter power | 20 W |
| Frequency range | Standard: 118.000...136.9916 MHz Extended (option): 118.000...155.9750 MHz [25 kHz spacing above 137 MHz] |
| Channel spacing | 25 kHz / 8.33 kHz |
| Operating temperature | -40...+70 °C |
| Operating Altitude | up to 50 000 ft |
| Vibration | Fixed wing & rotary wing |
| Interfaces | ARINC 429, RS422 |
| Control Devices | RCU6512 (Becker Avionics) RMU5000 (Becker Avionics) G7610 (Gables) RCU (Universal) ARINC 429 compatible |
| Certifications | EASA.210.10060121 |
| Standards | ED-23C, DO-186B, ED-67, DO-207, DO-160G |
| TX class | Class 3 & 5 |
| RX class | C & E & H2 |
| Design assurance level (DAL) | Level C (DO-178C & DO-254) |
| Dimensions WxHxL | details see drawing, dimensions with mounting tray |
| Weight | ≤ 2.5 kg (5.5 lbs) incl. mounting tray |